

Greetings From **Hartstone Bible Camp**





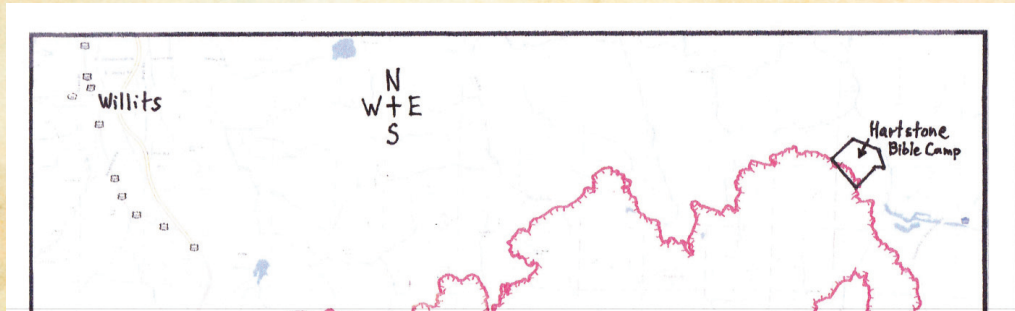
Holiday Newsletter 2017

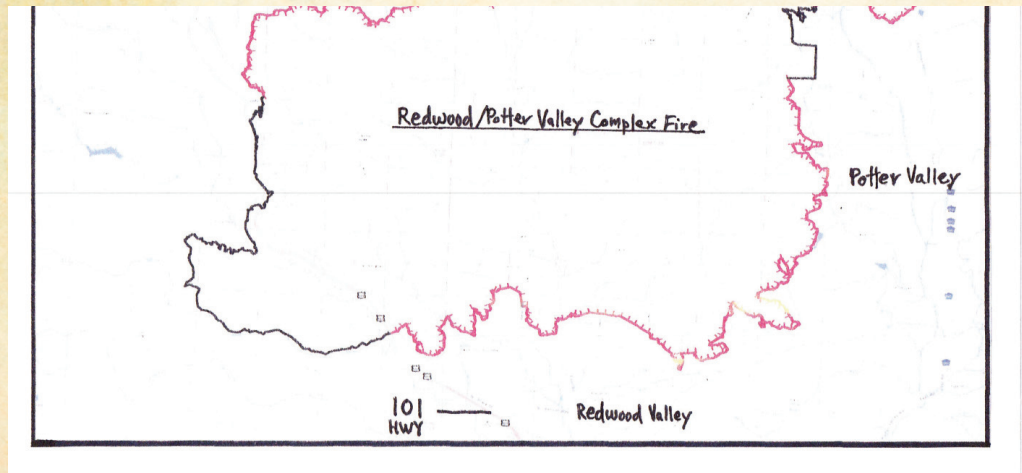
Dear friend of Hartstone,

As a fire burns a forest and as a flame sets mountains ablaze, Chase them with your fierce storm; terrify them with your tempest. Utterly disgrace them until they submit to your name, O LORD. Let them be ashamed and terrified forever. Let them die in disgrace. Then they will learn that you alone are called the LORD, That you alone are the Most High, supreme over all the earth.

- Psalm 83:14-18

When fires rage, winds howl and the earth quakes, these flashes of power cause us to stop and recognize the greatness of our God and the fragility of man. In light of the fire storm we went through, may we all respond rightly by bowing our knees and proclaiming to our sovereign Creator: "You alone are the Lord, the Most High, supreme over all the earth"





What an amazing year it has been! By God's grace He spared Hartstone from the flames of the Redwood/Potter Valley Complex Fire. Even though the fire came down on the top part of the property, God protected our surrounding neighbors and the camp. Although Hartstone didn't burn, it still got hit hard by the wind storm that caused the fires throughout Northern California. Thank you to all for your prayers, love, support and to those who came and helped us clean up all the fallen trees and debris around camp.

UPDATE: 2017 marked our 50-year anniversary in ministry. We celebrated individually with each camp by having an ice cream sundae bar on the first night of their camp. Praise God for establishing Hartstone to bless His church for half a century.

Continued....

YEAR AT A GLANCE:

- New website: www.hartstonebiblecamp.org
(*We are super excited about our new site-please take a second to go and check it out*)
- New branding logo and Hartstone merchandise Line
- Chapel Project: Phase 2 Completed
- Bath House Renovation
- New Walk-In Freezer
- Kitchen Back Pantry Renovation
- Dining Hall: Entrance area, Dining room, and Kitchen interior re-themed/decorated.
- A/C Units in all the cabins

NEEDS:

1. Work truck for Hartstone

Our 2 camp trucks: Goose and Mater, are both over 30 years old and have been costing us a lot in maintenance and repair bills. We would like to have a more reliable newer truck. Specs needed: 3/4 Ton w/tow package, 4x4, long-bed, Additional wants: Side tool boxes, lumber rack. If someone has a truck like this that they would like to donate or if someone would like to financially gift this, we estimate the cost being around \$10,000.

2. Chapel Project: Phase 3

So far, we have been able to do the first two phases debt free from the generous donations from Hartstone supporters. Depending on how the Lord provides for this last and final phase will determine how soon we can begin. We estimate the cost to be around \$150,000. Phase 3 will be an addition to the front of the chapel where we will put in new handicap ADA restrooms with a lobby area. The area will include a fireplace and comfortable seating.

We will also have a display telling and showing the history of the Hartstone ministry. This will be accompanied by a beautiful covered porch entrance leading into the lobby restroom area with an HVAC system for the sanctuary and lobby. We will complete the chapel project by putting on the outside of the entire chapel a nice aesthetic wood finish. Please pray that the Lord would provide the final funds to complete this project. We believe that His provision thus far is evidence that not only does our Lord deserve worship, but He highly desires it! We are so excited to be able to bless our brothers and sisters in Christ who visit Hartstone with a new beautiful place to hear from His Word, pray, and worship in song! Please prayerfully consider how you could partner with us.

3. \$50,000 Electrical Power Upgrade

In order for us to do the final phase of the chapel project, we need to supply sufficient power to support the addition as well as the HVAC system. This would also allow us to provide power for a potential new resident housing in the future in that general area along with upgrading the power supply to our RV sites which are currently under powered.

If you would like to be a part of this Christ honoring endeavor, you can make a tax-deductible donation to Hartstone Bible Camp and in the memo identify "Chapel Project." If this is not designated, your contribution will go into our general fund which helps us in our overall camp operations. If you would like to donate via PayPal, you can do so through our website: www.hartstonebiblecamp.org (We praise God that over the last 5 years Hartstone has benefited from monies received from family trusts, please consider us in your estate planning).

Thank you for your partnership in this ministry. God bless!

Not to us,
(Psalm 115)

Dave Dick, Director
Hartstone Bible Camp

17856 Van Arsdale Road, Potter Valley, CA 95469 / (707) 743-1621 / dave@hartstonebiblecamp.org



Chapel Project Phase 2
New Lighting + AV System



Chapel Project Phase 2
Sound Booth



Women's Side



Men's Side

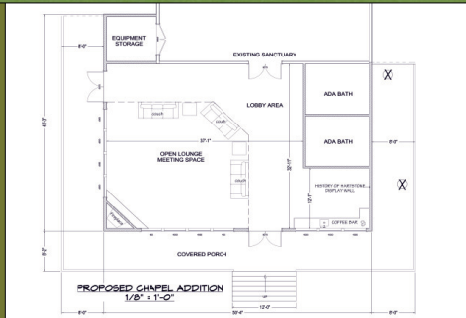
Bath House Renovation



New Walk-In Freezer & Pantry



New Hartstone Merchandise



FINAL PHASE OF CHAPEL PROJECT

